



# GMT MONTHLY MEMBERSHIP PROGRESS REPORT

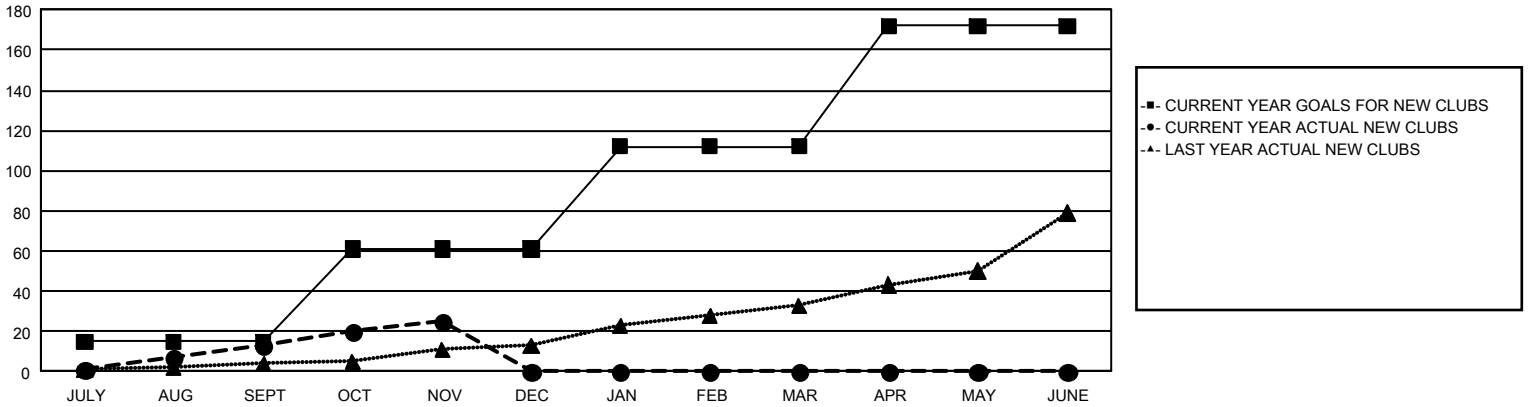
## GAT Constitutional Area 4

Results as of: 11/30/2023

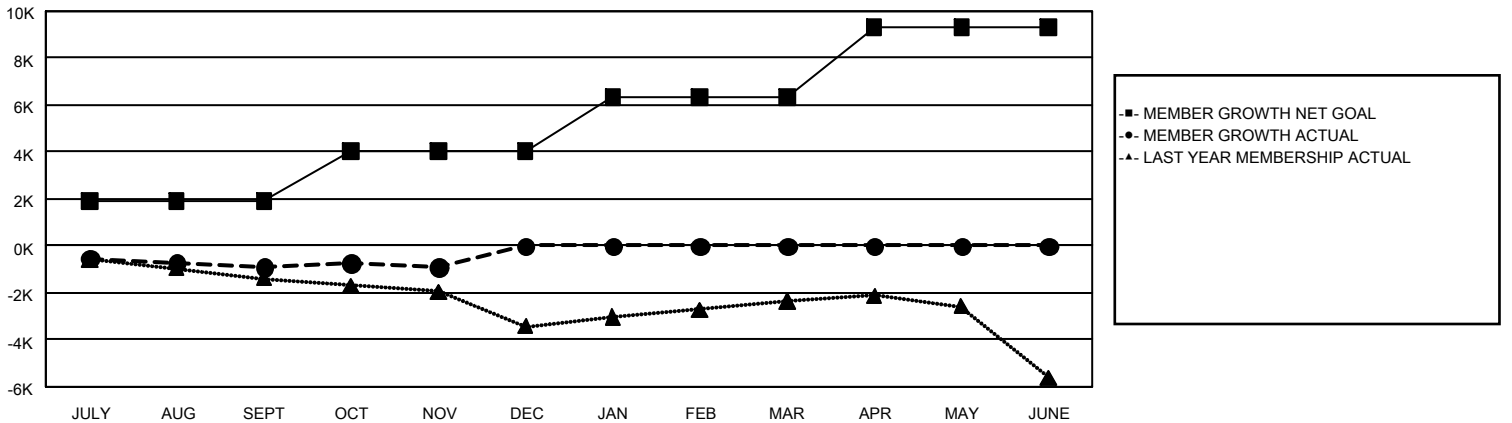
REPORT DOES NOT INCLUDE CLUBS IN UNDISTRICTED AREAS.

Clubs				Members			
RESULTS FOR 2023-2024				RESULTS FOR 2023-2024			
QUARTER	NEW CLUB GOAL	NEW CLUBS	DROPPED CLUBS	QUARTER	MEMBER GROWTH NET GOAL	MEMBER GROWTH ACTUAL	DROPPED MEMBERS ACTUAL (including transfers)
JULY/AUG/SEPT	15	13	56	JULY/AUG/SEPT	1,905	3,462	3,882
OCT/NOV/DEC	46	12	9	OCT/NOV/DEC	2,135	2,989	2,734
JAN/FEB/MAR	51	0	0	JAN/FEB/MAR	2,291	0	0
APR/MAY/JUNE	60	0	0	APR/MAY/JUNE	2,999	0	0

GOALS AND ACTUAL NEW CLUBS CUMULATIVE



GOALS AND ACTUAL MEMBERS CUMULATIVE



DROPPED CLUBS: 65	2,733 CLUBS OF 8,878 ADDED 1 OR MORE NEW MEMBERS	<u>GENDER DISTRIBUTION</u>	
<u>DROPPED MEMBERS</u>		MALE	165,144 (74.62%)
DECEASED	915	FEMALE	56,132 (25.36%)
CLUB CANCELLED	184	TOTAL FAMILY UNIT MEMBERS 11,187	
OTHER	5,514	FAMILY MEMBERS PAYING HALF DUES 5,776	
<b>TOTAL</b>	<b>6,613</b>		

[CLICK HERE FOR CUMULATIVE MEMBERSHIP DATA](#)